

129. **Stelis acrisepala** Luer & Hirtz, sp. nov.

Ety.: From the Greek *acrisepalus*, "with pointed sepals," referring to all three sepals.

Species haec *S. schomburgkii* Fawc. & Rendle, affinis, sed sepalis glabri quasi liberis anguste ovatis acutis duplolongioribus et labello oblongo apice breviter apiculato differt.

**Plant** medium in size, epiphytic, caespitose; roots slender. Ramicauls erect, slender, 4-6 cm long, enclosed by a tubular sheath from below the middle and 2-3 sheaths at the base. **Leaf** erect, coriaceous, narrowly elliptical, subacute, 5-8 cm long including an indistinct petiole ca. 1.5 cm long, 0.6-0.8 cm wide, narrowed below into the base. **Inflorescence** an erect, congested, distichous, many-flowered raceme with most flowers open simultaneously, 10-13 cm long including the peduncle ca. 3 cm long, subtended by a slender spathe 6-8 mm long, from an annulus below the apex of the ramicaul; floral bracts tubular, acute, 3.5 mm long; pedicels 1 mm long; ovary 1.5 mm long; flowers yellow, **sepals** similar, glabrous, free nearly to the base, narrowly ovate, acute, the dorsal sepal 4.5 mm long, 2 mm wide, 3-veined, the lateral sepals held forward, 4.25 mm long, 1.6 mm wide; **petals** transversely oblong, shallowly concave, without a transverse callus, 0.5 mm long, 1 mm wide, 3-veined, the apex broadly truncate with the margin thickened; **lip** thick, suboblong, 1 mm long, 0.6 mm wide, 0.5 mm deep, concave anteriorly with the apex subtruncate, sharply short-apiculate, the bar with a cleft glenion, the dorsum with low calli, densely short-pubescent at the base, the base broadly truncate, hinged to the base of the column; **column** stout, 1 mm long, 0.8 mm wide, the foot obsolescent, the anther and the stigma apical, the stigma transversely bilobed.

**Loja:** near the pass along the new road north of Loja, alt. 2700 m, 2 Feb. 1987, C. Luer, J. Luer & A. Hirtz 12589 (Holotype: MO).

This species is closely allied to the widely distributed *S. schomburgkii* of the *S. aprica*-alliance. It differs from them by the twice longer, narrowly ovate and acute sepals, three-veined petals, and proportionately longer lip.

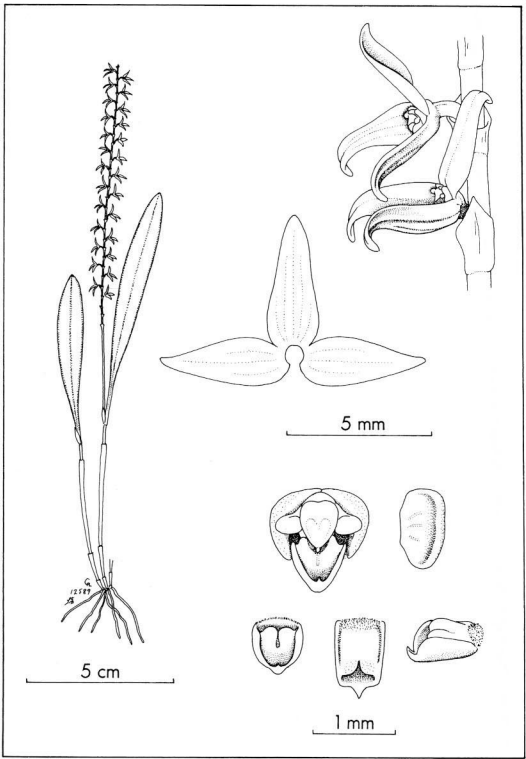


Fig. 129. *Stelis acrisepala*